

# SOUTH REGION HEALTHCARE COALITION MEETING

JANUARY 23RD, 2025

---

**Virtual Sign-in  
Sheet**



SOUTH HCC Leaders:  
Robert Saunders & Lawrence Phillips

Clinical Advisor:  
Dr. Alexander Kuc

# Agenda

---

- Welcome
- NJCICC Presentation
- Clinical Advisor Presentation
- Coalition Updates
- Coalition Discussions
- Member Updates
- Technical Support Reminder and Upcoming Meetings
- Closing Remarks



# New Jersey Cybersecurity and Communications Integration Cell



# Clinical Advisor Updates

---





# VEHICLE RAMMING ATTACKS

Alexander Kuc MD

NJHCC South Region 1/23/25

# Agenda

Background

Epidemiology

Examples

Preparedness

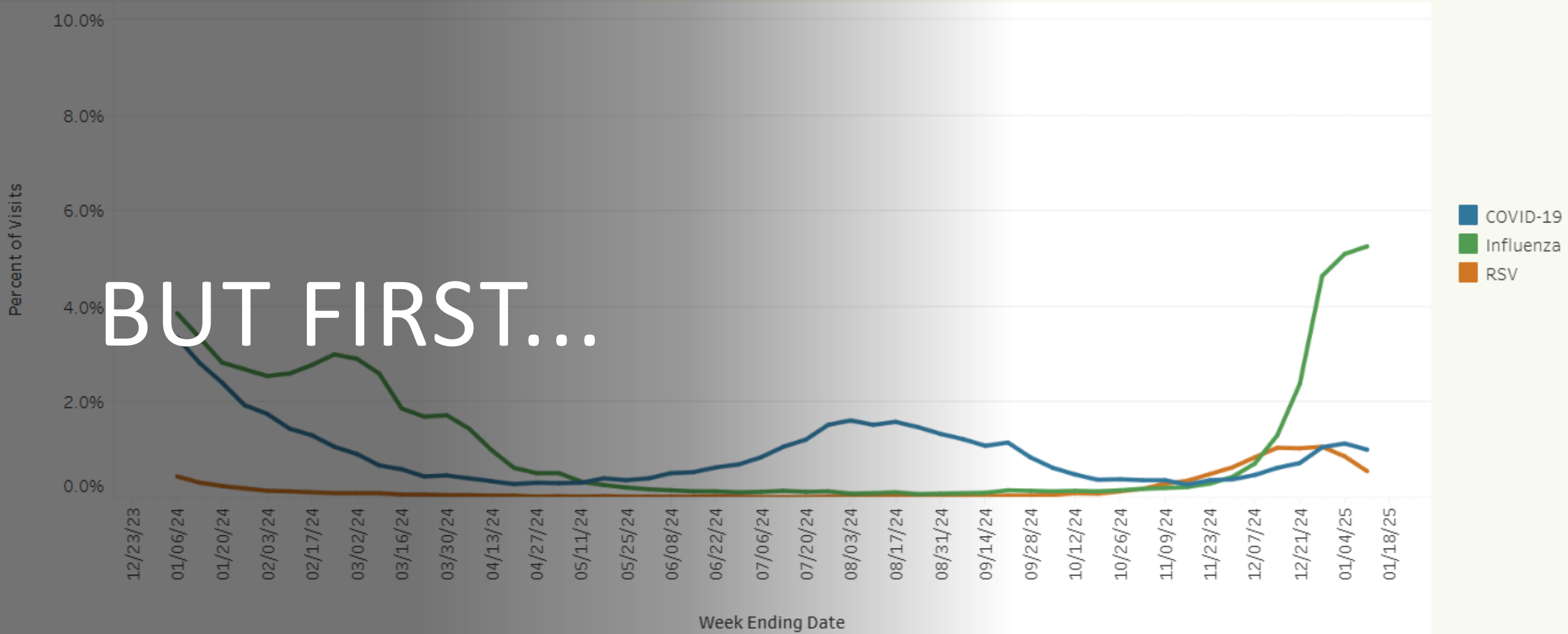
# Emergency Department Visits

Start Date

1/6/2024

End Date

1/11/2025





## OEMS guidelines

- Surgical mask when caring for patients with flu-like symptoms
- N95 for aerosolizing procedures
- Consider masking patient with suspected flu-like illness



PPE





# Background

After Covid, increase in outdoor activities, dining

Vehicle ramming relatively rare but became more common just prior to pandemic

Ease of access to vehicles, minimal planning, increasingly popular for lone actors


# Epidemiology

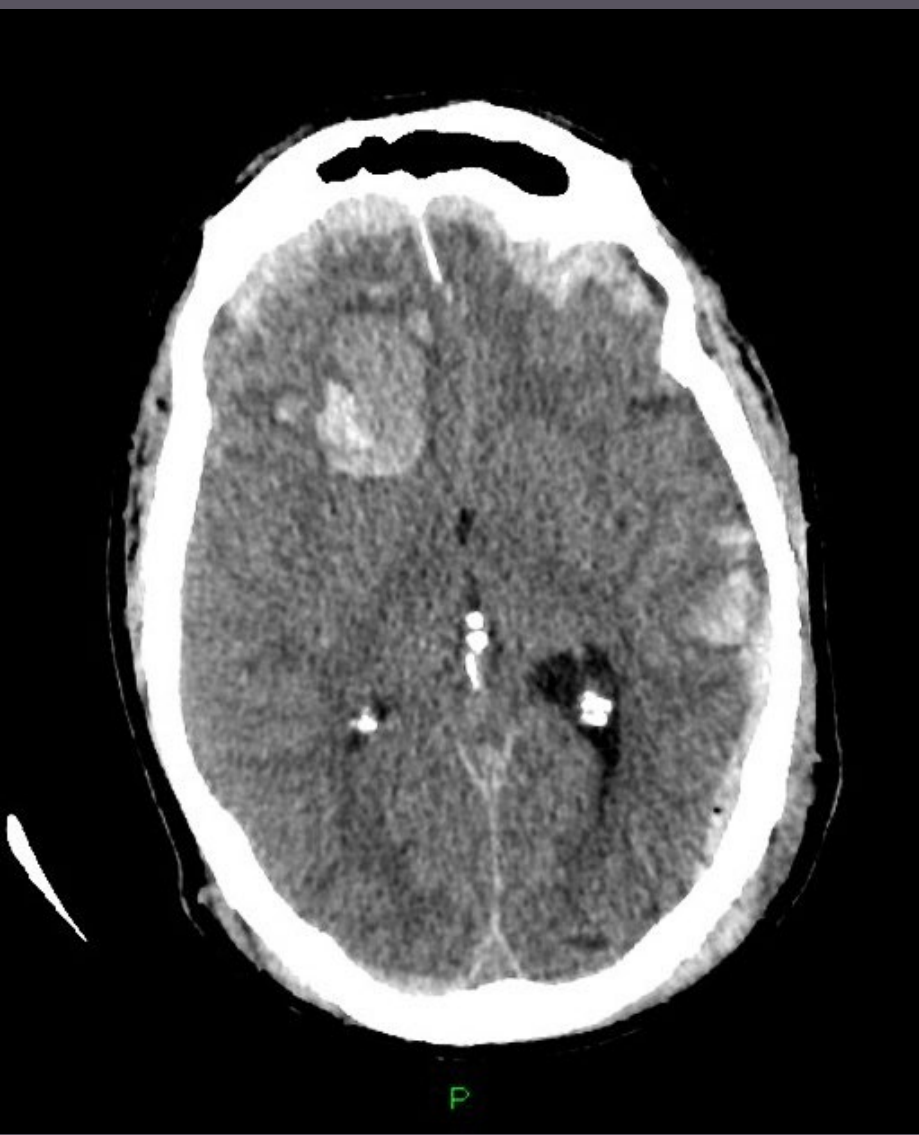
- 257 attacks involved some type of vehicle between 1970 – 2019
- 808 fatalities, 1715 injuries (excluding 9/11)
- 76 West Bank and Gaza strip, 25 USA, 16 Israel, 14 UK



Trauma Surgery  
& Acute Care Open

## Democratization of terrorism: an analysis of vehicle-based terrorist events

Ryan Scott Houser  1,2,3



# Injury pattern

Blunt, non-penetrating trauma

Higher severity of injury and mortality than general pedestrian injury

More intubated, higher surgical procedures

Decelerating vehicles vs deliberate acceleration

Shoved away (extremity and pelvis) vs

Pushed towards (severe head trauma)



# Nice, France

Bastille Day, 2016

19-ton cargo truck

Ramming attack, shooting,  
stampede

86 people killed

434 injured



# Berlin, Germany

Christmas market, 2016

Semi-trailer truck

12 dead

56 injured



# Charlottesville, Virginia

August 2017

Dodge Challenger into  
crowd of protestors

1 dead

35 injured





# Waukesha, Wisconsin

Christmas parade, 2021

Ford Escape driven past barricades

6 dead

62 injured

Special population



# Prevention

## Barriers

- concrete
- vehicle

## Traffic calming measures







THANK YOU!

# Coalition Updates

---

- Current Real-World Events
  - International Longshoremen's Association (ILA) Strike
  - IV Solution Shortage (Baxter)
- NJHCC.org Website Updates
- Supply Chain Integrity Assessment
- Jurisdictional Risk Assessment (JRA)
- Statewide Workplace Violence Committee Meetings
- Medical Response Surge Exercise (MRSE) Planning Group Meetings



## ➤ Primary Purposes

- To assess pre-hospital care, triage, and transportation capabilities
- To assess facility and regional medical patient surge plans
- To assess regional readiness and collaboration amongst healthcare agencies

## ➤ Exercise Date:

➤ **03.11.2025**

## ➤ Venue:

➤ Virtual – Statewide



The graphic features a dark blue background with a blurred image of an audience. In the top left, the New Jersey Healthcare Coalitions logo is displayed. The main title 'MRSE FUNCTIONAL EXERCISE 2025' is centered in large white letters. To the right, a green circle contains the text 'Save the Date!'. Below this, the date 'Tuesday, March 11th' is written in white, followed by 'Statewide Virtual Functional Exercise'. A large QR code is positioned in the bottom right, with the text 'REGISTER TODAY' above it. At the very bottom, contact information is provided: 'For more information: +1-800-457-2262 or RHCC@NJHA.com'.

NEW JERSEY  
HEALTHCARE COALITIONS

Save the Date!

**MRSE  
FUNCTIONAL  
EXERCISE  
2025**

Tuesday,  
March 11th

Statewide Virtual  
Functional Exercise

**REGISTER  
TODAY**

For more information: +1-800-457-2262 or RHCC@NJHA.com

# Coalition Updates Continued

---

➤ National Healthcare Coalition Preparedness Conference (NHCPC) Update

➤ Upcoming Conferences

➤ Association of Healthcare Emergency Preparedness Professionals (AHEPP)

➤ New Jersey Emergency Preparedness Association (NJEPA) Conference

➤ NACCHO 2025 Preparedness Summit

➤ 2025 NJHCC Strategic Planning Meeting



# Coalition Updates Continued

---

- National Healthcare Safety Network (NHSN) Dashboard



- Hazard Vulnerability Assessments (HVA) Update



# Upcoming Meeting Dates & Times

---

**February 19<sup>th</sup>, 2025**

**8:30am – 4pm**

NJHCC Strategic Planning Meeting

Location – Pines Manor in Edison, NJ



**Register Today!**

**Tentatively March 27<sup>th</sup>, 2025**

**10am – 12pm**

In-Person South HCC Meeting

Location – To Be Determined

# Member Updates

---

- Acute Care
- LTC / Post-Acute
- FQHC
- Public Health
- OEM
- Home Care & Hospice
- EMS
- Behavioral/Mental Health



# Reminders...

---

- The New Jersey HealthCare Coalition Emergency Management Support Team is always available 24/7 to assist with any item you may need such as...
- COOP Plan Development
- EOP Development
- NIMS Compliance
- Regulatory Information Gathering
- Cyber Assistance
- Current Industry Practice Information (“Colleague Questions”)

# SOUTH REGION HEALTHCARE COALITION

## FUTURE AGENDA ITEMS

---

IF YOU HAVE TOPICS OR INFORMATION THAT YOU WOULD LIKE  
REVIEWED / DISCUSSED, PLEASE REACH US AT:

**[rhcc@njha.com](mailto:rhcc@njha.com) or [\(800\) 457-2262](tel:(800)457-2262)**

OR VISIT OUR WEBSITE:

**[www.NJHCC.org](http://www.NJHCC.org)**

# Post-Meeting Feedback Survey

---

- Please take this 2-3 minute survey to better prepare us for future HCC meetings

